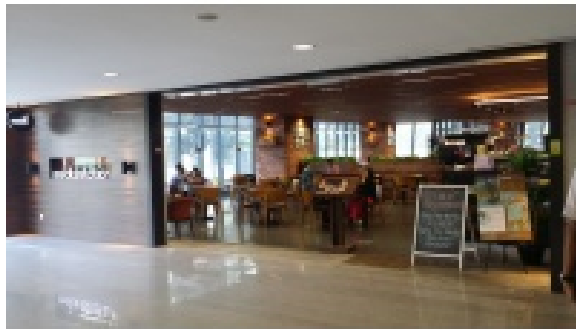
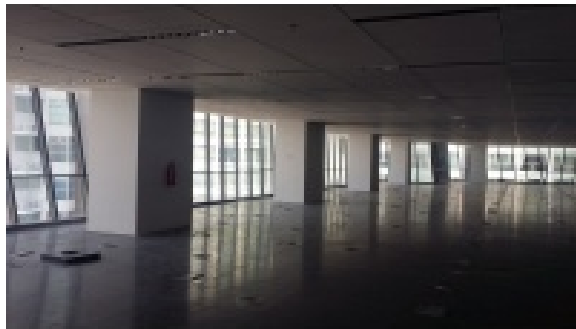
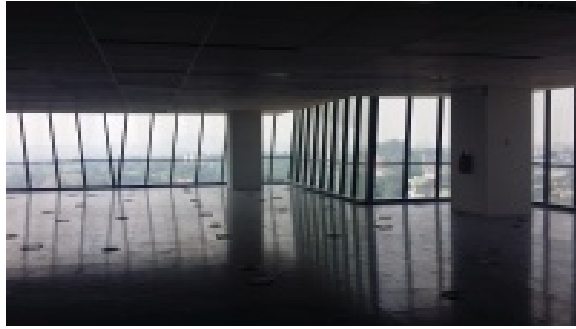


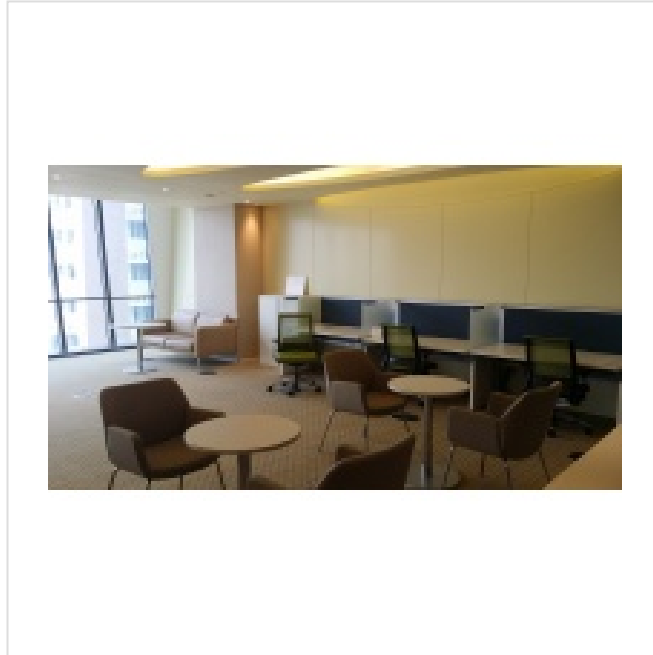
Menara Shell @ KI Sentral (MSC Cybercentre)











Menara Shell is a commercial office building development consisting of a 33-storey office tower together with a 5-storey podium and a 4-storey basement carpark. It is constructed on part of a parcel of freehold land and held under Geran 40094, Lot 348, Section 72, Town and District of Kuala Lumpur, Wilayah Persekutuan Kuala Lumpur, Malaysia.

Menara Shell is designed with energy efficiencies and green features, and has been accorded LEED platinum certification. In addition, it is also accredited with MSC Malaysia Status which is one of the requirements by many multinational and local corporates.

Menara Shell is strategically located at the south western portion of , a self-contained urban

development comprising an integrated transit hub known as Kuala Lumpur Sentral Station,

corporate office towers and business suites, 5-star international hotels, condominiums and

a shopping mall. It is within walking distance to Kuala Lumpur Sentral Station which

consists of 8 major transit lines including a dedicated line to KLIA and the soon to be

completed Mass Rapid Transit Line.

It is easily accessible from Kuala Lumpur city centre via Jalan Kinabalu, Jalan

Hishamuddin, Jalan Damansara and thereafter onto Jalan Tun Sambanthan which leads to

the property. Alternatively, it is also accessible from Petaling Jaya via Jalan Damansara

which forms part of the Sprint Highway, Jalan Maarof, Jalan Bangsar, Jalan Rakyat and

thereafter onto Jalan Tun Sambathan which leads to the property.

Rental Rate

From Rate (RMpsf): 8

To Rate (RMpsf): 8.5

Floor Size Information

Total Floors: 33

Minimum Size: 5000

Maximum Size: 16000

Location

No. 211, Jalan Tun Sambathan
Kuala Lumpur, WP 50470
Malaysia
3° 7' 50.2428" N, 101° 41' 6.1584" E

Extra Information

Building Features: 24 hours security, Centralised air-con, Common area CCTV, Covered parking, Fibre Optic Backbone, High-speed broadband, Lift access control, Office lobby reception, Open parking, Split unit air-con, Turnstile access control

Amenties: LRT/MRT/Monorail, KTM, Covered Parking, Public parking nearby, Hotel, Shopping Mall,

Retail shops, Food & Beverage outlets, Post office,
Clinic, Conference Facilities, Common Meeting Rooms,
Surau
MSC
Green Building
Street View:

Agent In-charge

Ho Chin Kun

**Agent's
Picture:**



Agent's Name: Ho Chin Kun

Agent's Email: ho_ck@corporateoffice.my

**Agent's
Contact:** +6014-6262 623

Google Map : Property Location

Javascript is required to view this map.

DISCLAIMER: -

Rental rates and availability are subject to change from time to time without prior notice and subject to the landlord's final confirmation. Huttons Oneworld Sdn Bhd is also not be held liable to any liability or loss incurred due to the use of the above information.

Source URL: <http://www.corporateoffice.my/menara-shell-kl-sentral-msc-cybercentre>